

A green silhouette map of Australia is centered on the slide. Overlaid on the map is the text "My research in Australia" in a dark green, serif font. The text is arranged in two lines: "My research in" on the top line and "Australia" on the bottom line. The map shows the outline of the Australian continent, including Tasmania to the south.

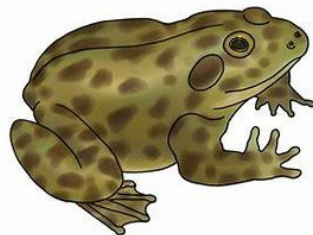
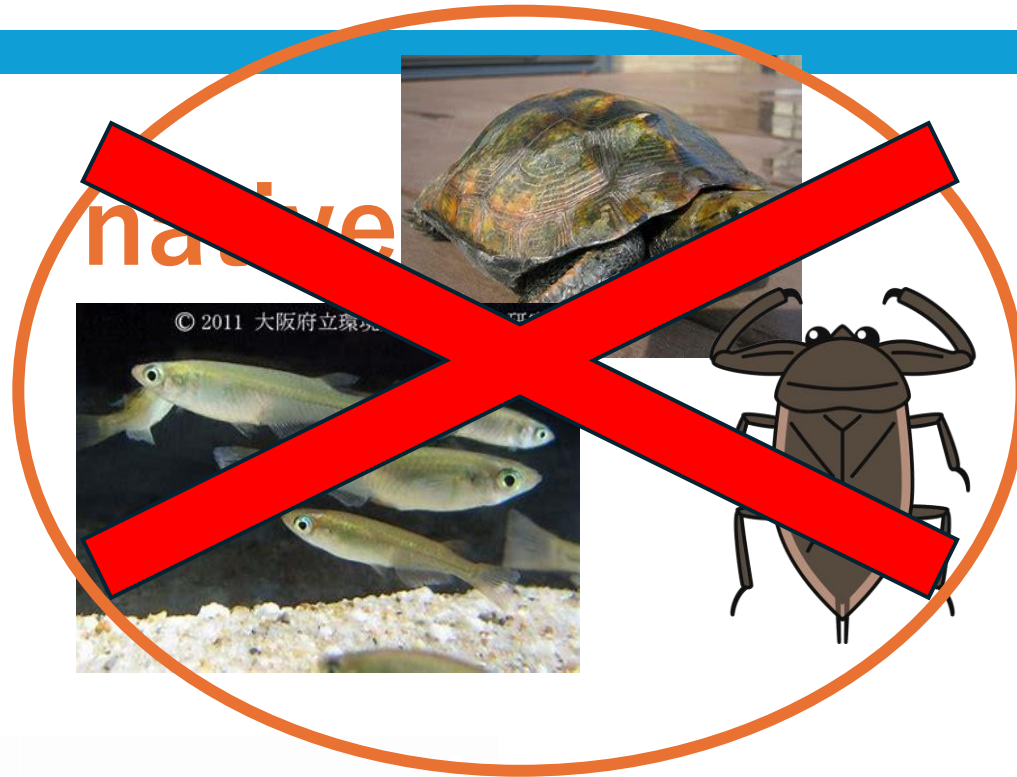
My research in Australia

Research
topics

**invasive
species**



In JAPAN...



So...

I want to know the way to resist
invasive species.



Research contents

① **Distribution** of invasive plant species in Melbourne

② Influence of **allelopathy** of plants



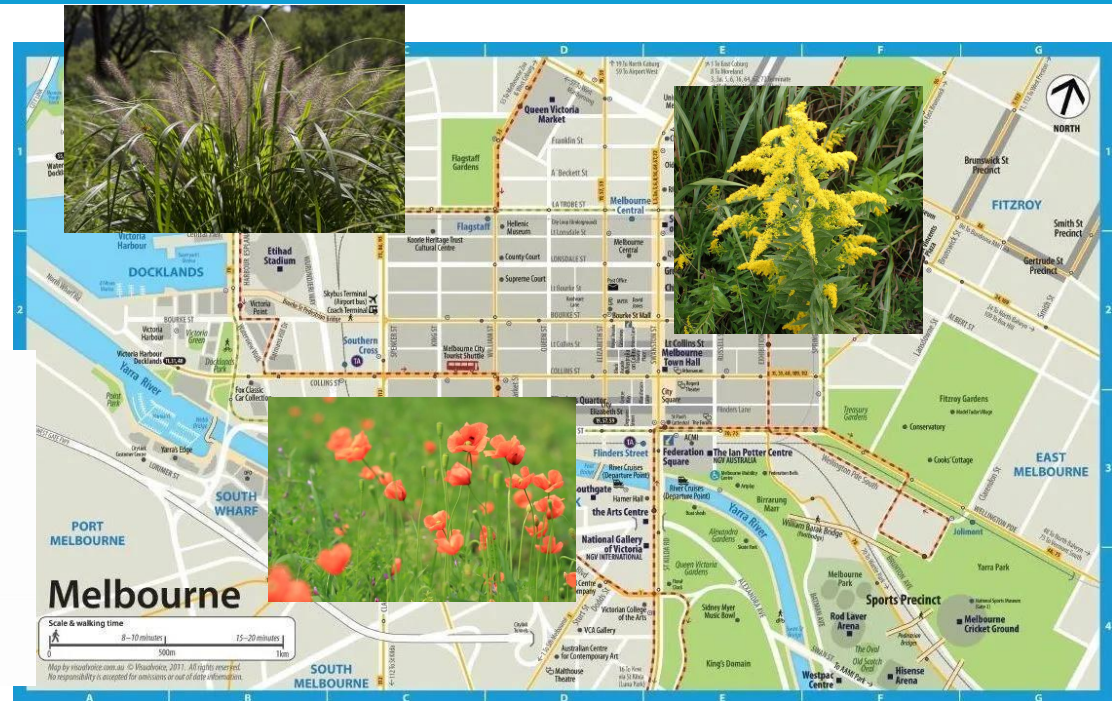
?

① Distribution of invasive plant species in Melbourne

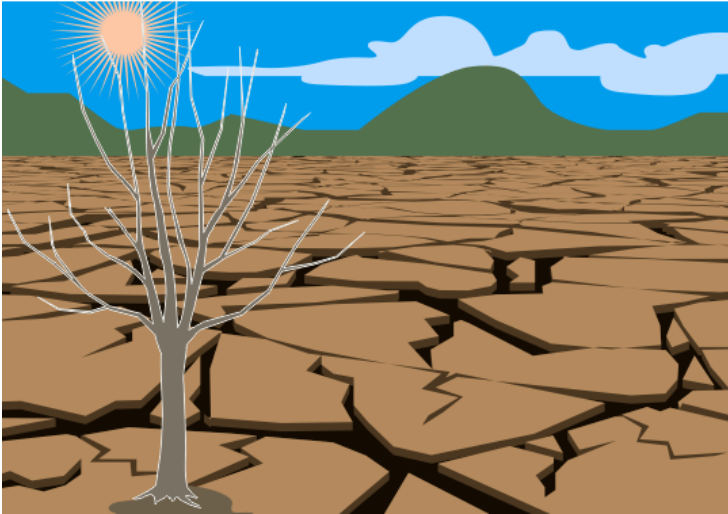
research methods

Walk around Melbourne
and record the distribution.

<Points>
Sunshade?
Group?
Wet?



hypothesis



less amount of rain



drought resistance

example

【 Resistant to drying 】

- Canada goldenrod(セイタカアワダチソウ)
- paspalum(スズメノヒエ)
- Alpine poppy(ナガミヒナゲシ)

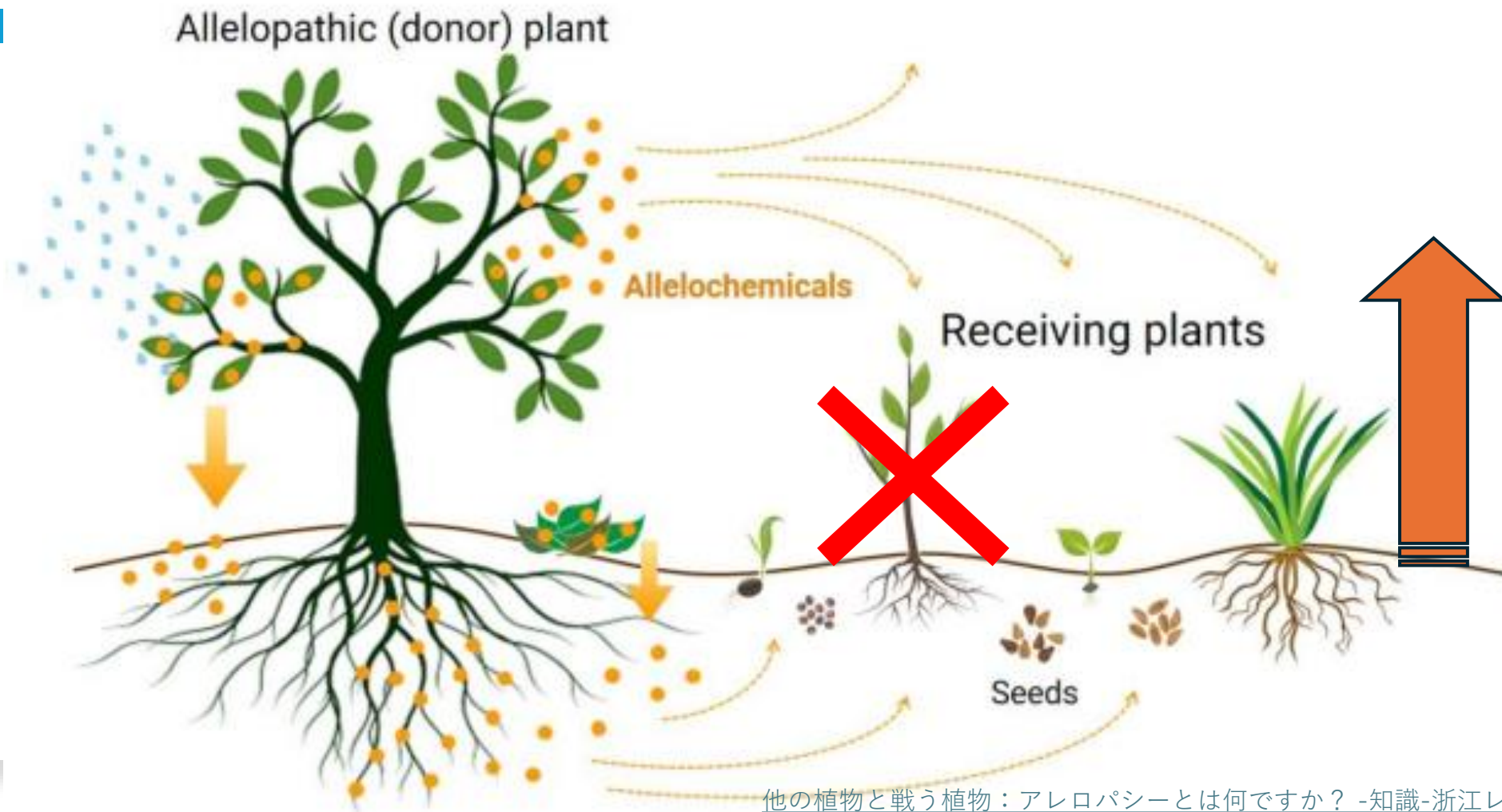


Result

- In FREE ZONE, there are only roadside tree or lawn.
- In the city, there are few invasive species like KUZU, but I didn't feel that invasive species affect native ecosystem like Japan.

② Survey of the influence of allelopathy of plants on other plants

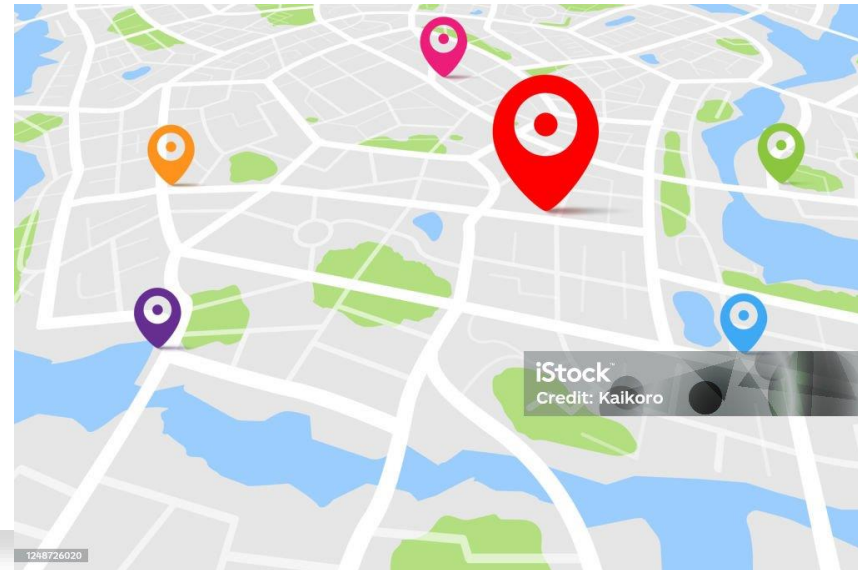
what is allelopathy?



② Survey of the influence of allelopathy of certain plants on other plants

【research purpose】

Expect the impact of allelopathy on plant distribution.



② Survey of the influence of allelopathy of certain plants on other plants



【research methods】

- 〈 1 〉 Collect plants and record the vegetation
- 〈 2 〉 Bake and Crush
- 〈 3 〉 Grow sprouted plants in the extract and water, and record growth rates



hypothesis

If the plant have allelopathy, maybe there are not other plants like invasive speacies.

Result



Without Eucalyptus



With Eucalyptus

Withered

Consideration

Eucalyptus have the effect that prevent grows of other plants.

Conclusion

Eucalyptus have the effect that prevent grows of other plants. So many invasive species can't grow at Melbourne.

My question

Have you ever seen below plants in Australia?



①

90%

② 60%



③ 10%





Thank you for listening